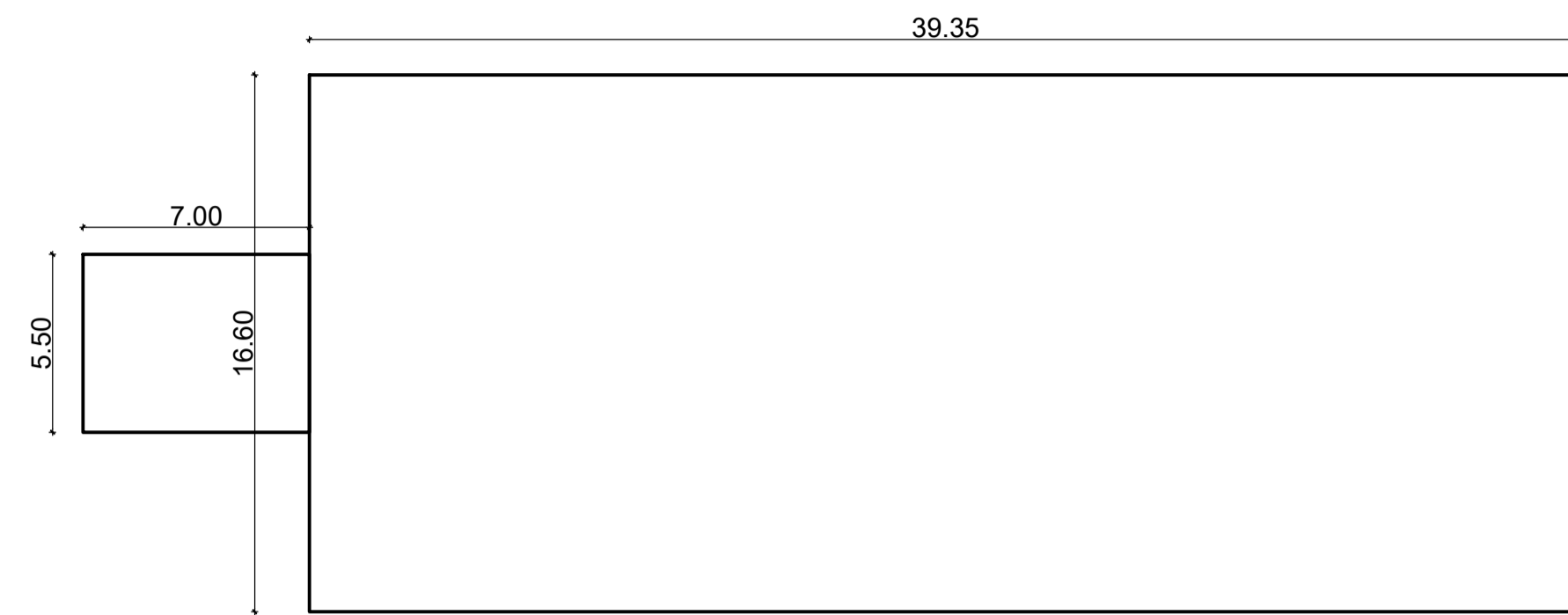
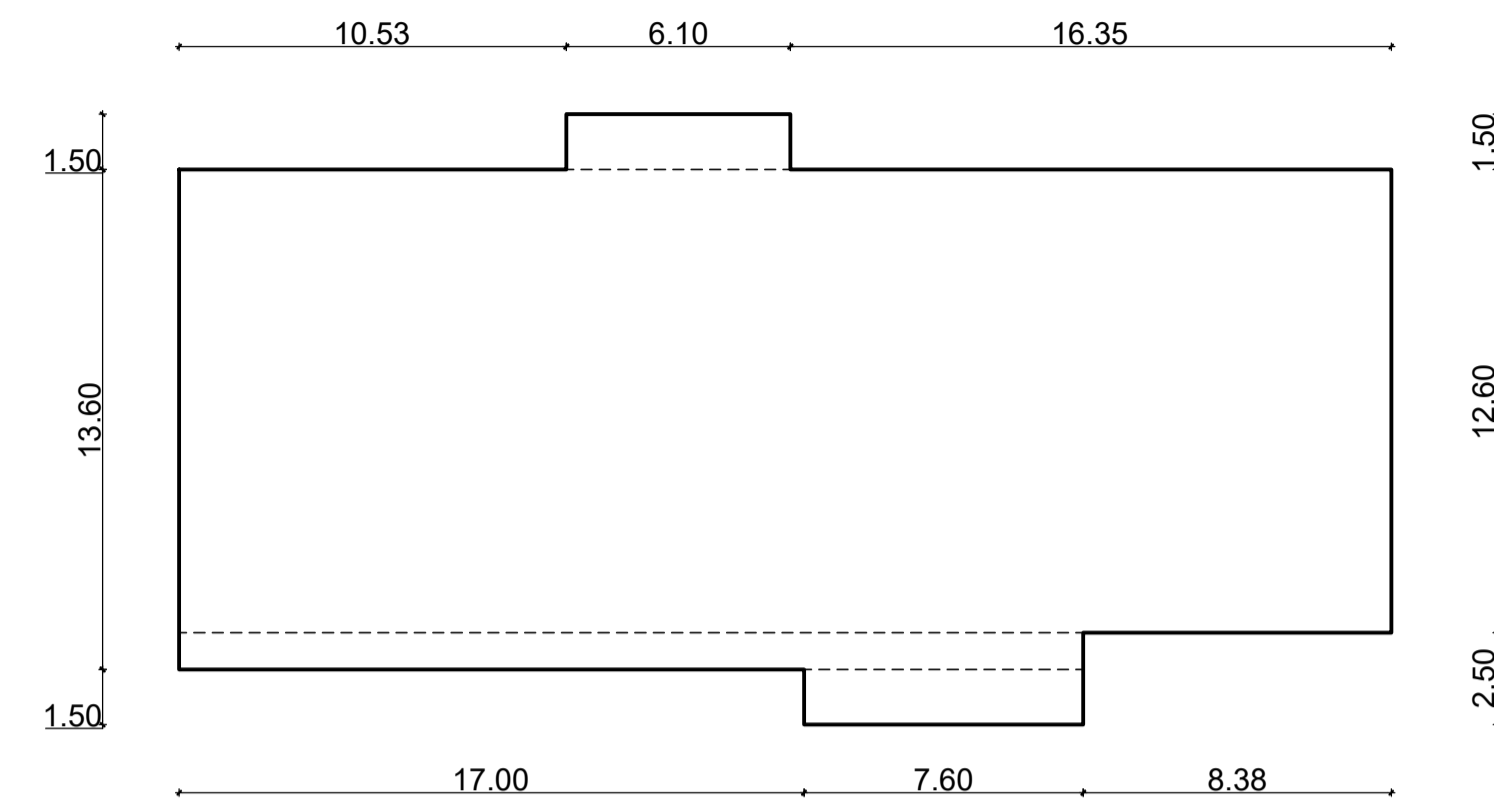


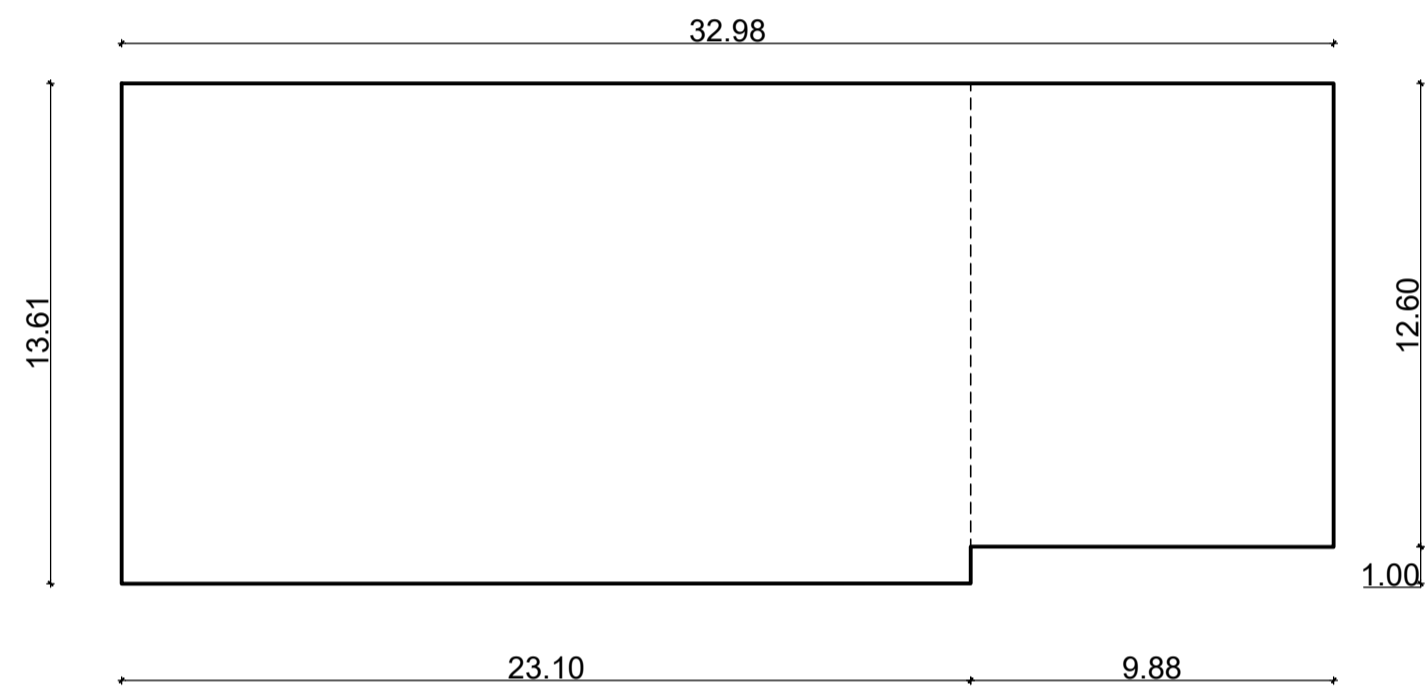
Piano Campagna
Superficie 682 mq



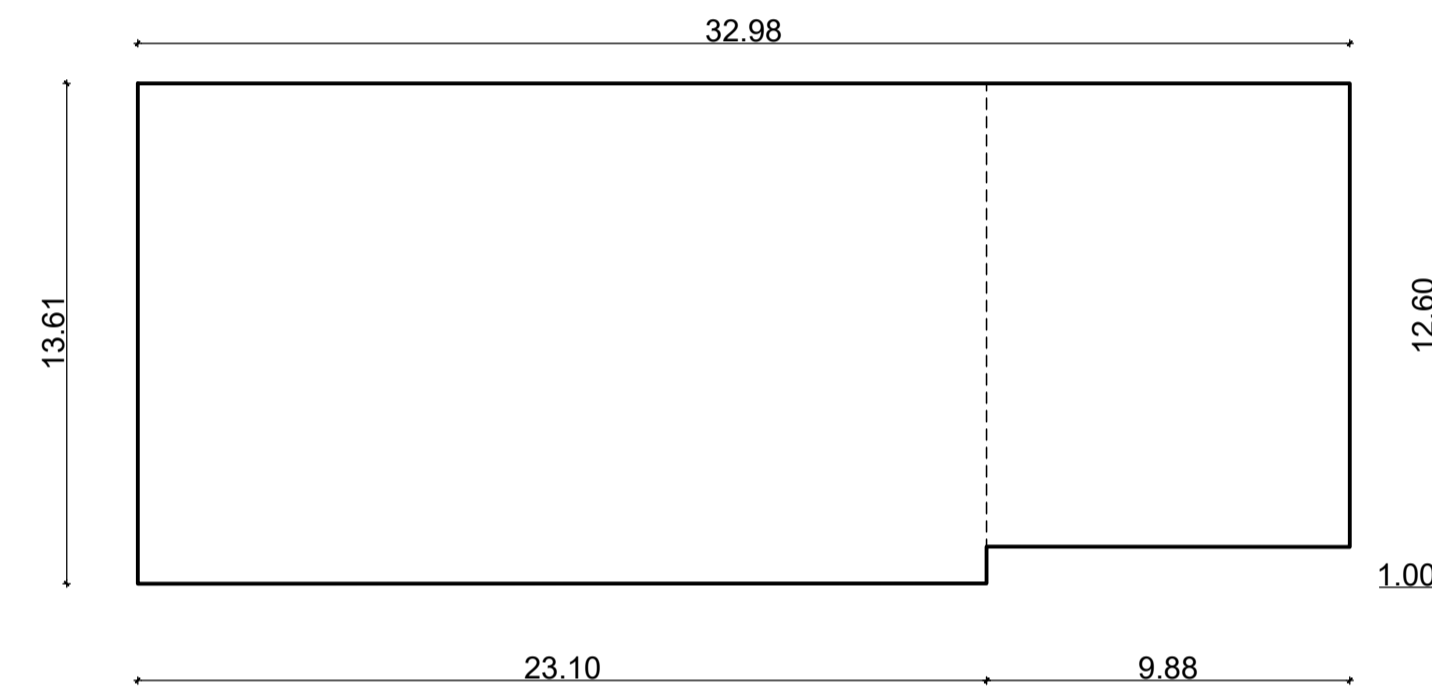
Piano Terra
Superficie 461 mq



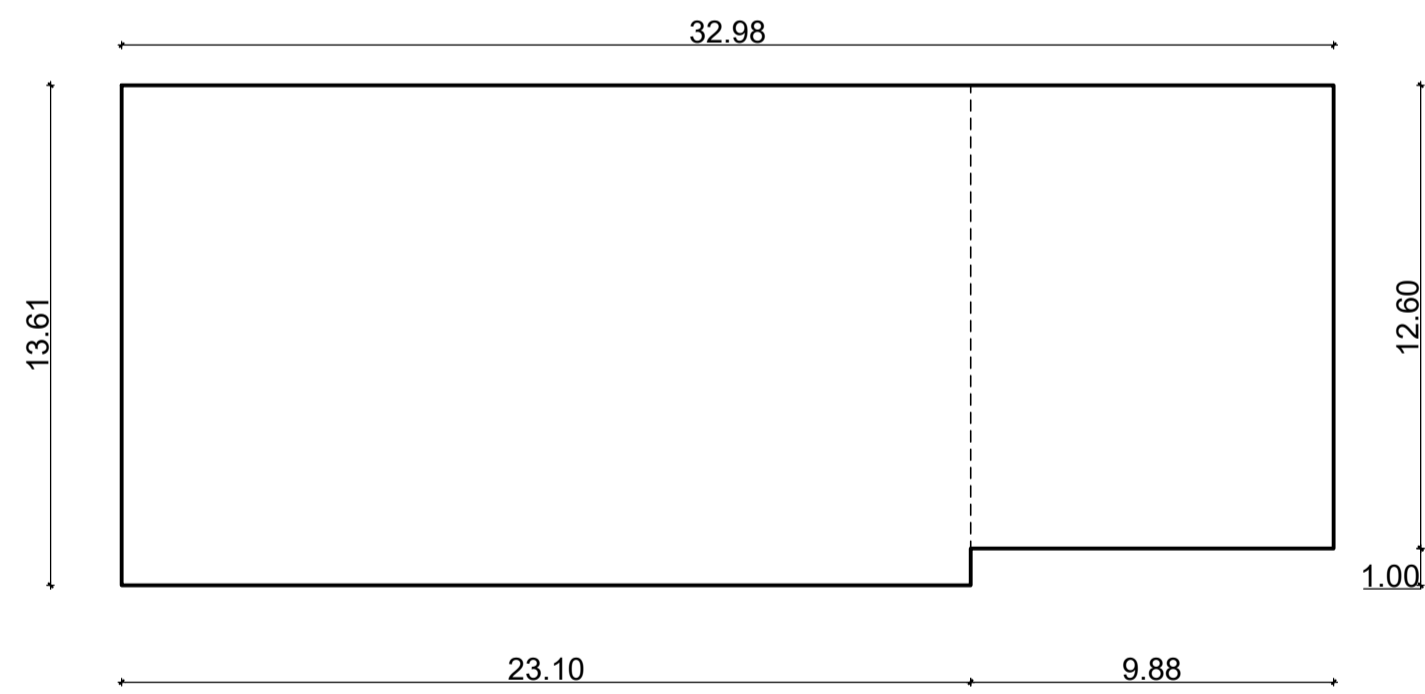
Piano primo
Superficie 439 mq



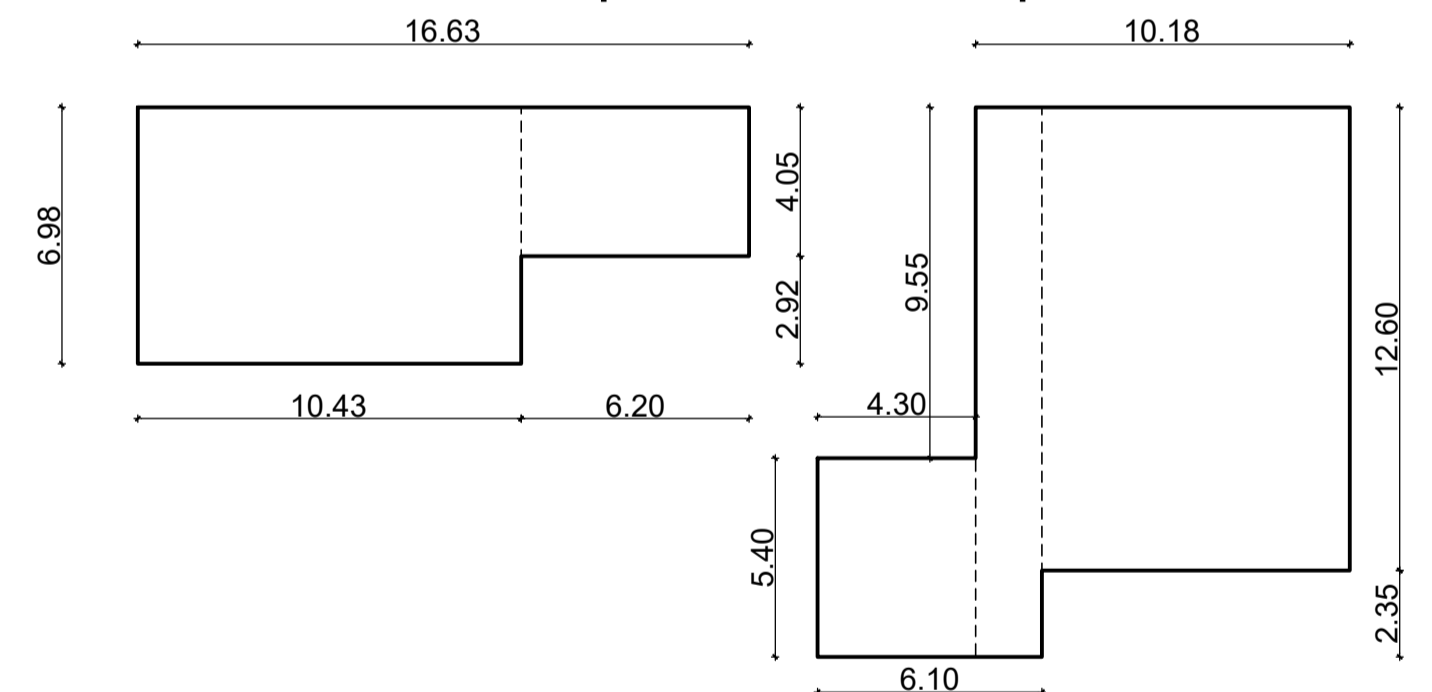
Piano secondo
Superficie 439 mq



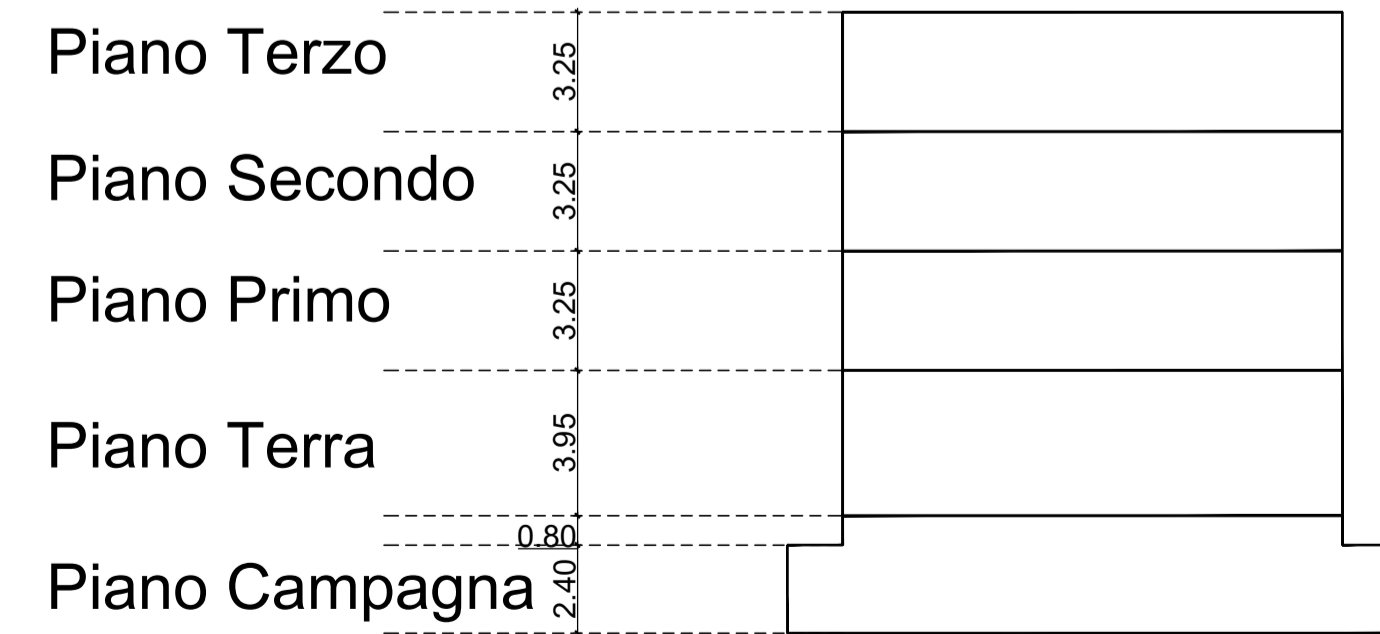
Piano terzo
Superficie 439 mq



Piano copertura
Superficie 214 mq



Piano Copertura



$$V = (682 \cdot 2.40) + (461 \cdot 0.80) + (439 \cdot 3.95) + (439 \cdot 3.25) + (439 \cdot 3.25) + (214 \cdot 3.25) = 8044 \text{ mc}$$